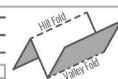
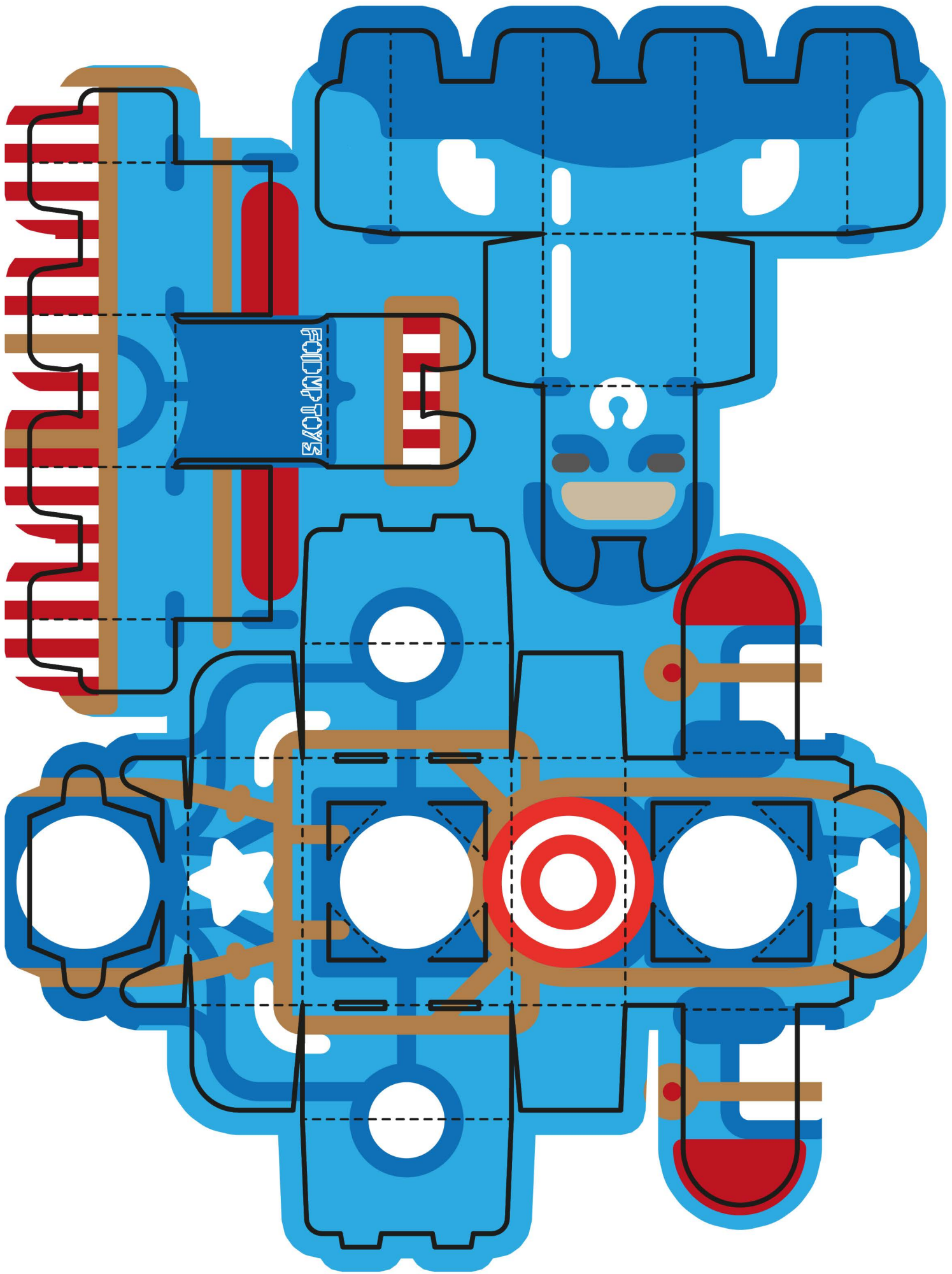


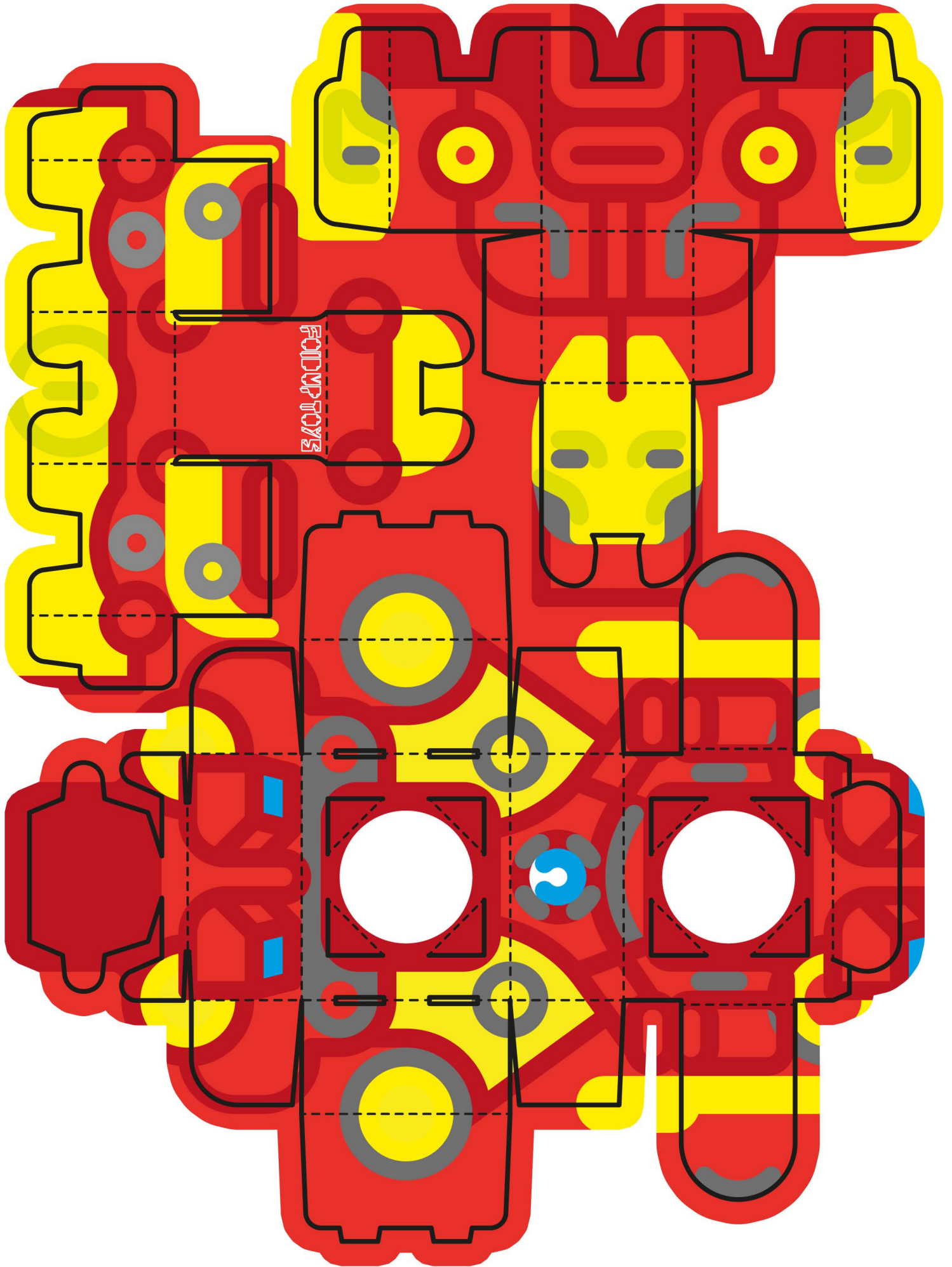
**Recommended**

Print onto 250GSM or heavier cardstock for best results.  
Score fold lines before folding with a craft knife or bone folder.  
Contact hello@folduptoys.com if you have any questions.

- 1) Cut
- 2) Hill Fold
- 3) Valley Fold
- 4) Glue







**Recommended**

Print onto 250GSM or heavier cardstock for best results.  
Score fold lines before folding with a craft knife or bone folder.  
Contact hello@folduptoys.com if you have any questions.

- 1) Cut
- 2) Hill Fold
- 3) Valley Fold
- 4) Glue

